

Lympha Pants®

Treat the lower body, including the entire trunk, abdomen, hips, and genital area.

Lympha Press Optimal Plus™



The Optimal Choice for Your Lymphedema Patients

Groundbreaking
technology to treat:

- Hereditary lymphedema
- Secondary lymphedema
- Post-mastectomy syndrome
- Lipedema*

Lympha Press® leads the way with the Optimal Plus.™

Clinically proven to stimulate lymph protein absorption and increase lymphatic return during and after therapy, the Optimal Plus integrates research and cutting-edge technologies from around the world to offer more specialized patient care with the “Optimal” pneumatic compression.

*The Optimal Plus is cleared by the FDA for the treatment of lipedema.

Lympha Press®
Dynamic Compression Therapy

Comfysleeve™

Twelve overlapping chambers are designed for comfortable, effective treatment of the entire leg, foot and ankle areas. Available in a range of lengths and widths, including extra wide.

Lympha Press® Optimal Plus™

Choose from a variety of features to design and control the optimal therapy for every patient:

THERAPY MODE OPTIONS INCLUDE:

- **Sequential Therapy** – This is the featured mode in most clinical studies. Maintains a “distal hold” through each cycle, preventing backflow and ensuring distal-to-proximal fluid migration and re-absorption.
- **Peristaltic Therapy** – Also called “Wave” therapy, peristaltic compression inflates sequentially but does not maintain a distal hold. This is ideal for sensitive patients or patients with painful wounds. Patients can stay with Peristaltic Therapy or move to Sequential as their condition improves. The Optimal Plus gives patients the freedom to choose.
- **Pre-Therapy** – Following the concepts of Complete Decongestive Therapy, Pre-Therapy begins proximally, clearing the watersheds, then moves to either Sequential or Peristaltic mode for the remainder of the treatment.
- **Post-Therapy Focus Modes** – Designed for patients with fibrotic tissue or hard-to-treat areas, Post-Therapy addresses specific regions of the limb at the end of treatment.

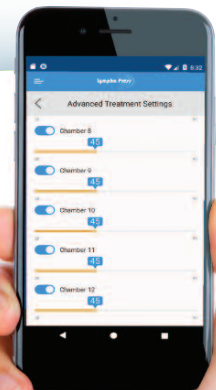
SPECIAL FEATURES:

- **Bluetooth** – Smartphones become remote controls with the Lympha Press App. Start and stop therapy, or scroll through options that can be instantly added to your Optimal Plus through Bluetooth. Specific therapy programs can be saved and shared through text to other devices.
- **Adjustable range of precise pressures** displayed in mmHg on the display or through your smartphone.
- **Lympha Press® Smart Technology™** fills-to-fit (regardless of the patient's size or shape), and uses an adaptive pause that ensures complete deflation between cycles.
- **Adjustable hold times** during cycles and pause times between cycles.
- **System lock** that locks pressure and treatments to prescribed setting.

“The Optimal Plus is the most versatile tool available for your patients to maintain the progress they have made under your care. It offers a new level of responsiveness and control over the patient's therapy with advanced garments and features unavailable with any other device.”

- Deb Springer, RN, BSN, CLT
Compression Therapy Consultant

Our new
bluetooth
application
makes accessing
treatment features
easier than ever.



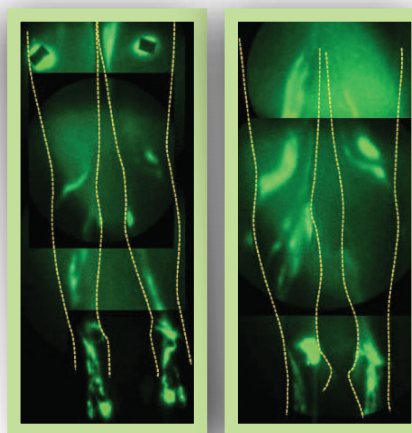
Lympha Press® clinical study breaks new ground in lymphedema care

This groundbreaking study is the first to demonstrate the direct impact of pneumatic compression on lymphatic function in lymphedema affected extremities, and showed how Lympha Press stimulated lymph vessel uptake and transport in real time during a treatment session.

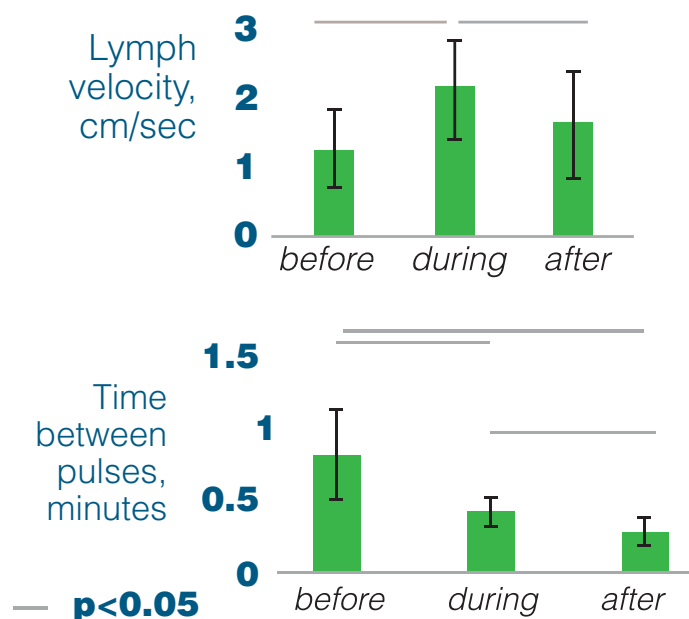
"We have actually seen in real time the way the Lympha Press device can activate the lymphatics to enhance lymphatic flow using near-infrared imaging technology. This validates what we understand clinically; that patients improve when they use the Lympha Press pneumatic compression device (PCD)."

- CAROLINE E. FIFE, MD

Chief Medical Officer, Intellicure, Inc.



Images taken of actual Lympha Press patients before and after treatment



The Study showed increased lymphatic flow and decreased time between lymphatic pulses during and after Lympha Press therapy.

Four key conclusions:

1

Lympha Press treatment causes absorption of lymph fluid, including proteins, by the lymphatics in lymphedema affected parts of the body.

2

Lympha Press increases distal to proximal lymph transport in lymphedema affected extremities.

3

Lympha Press increases speed and flow rate of lymph in affected extremities.

4

The Study demonstrates lymph vessels pulsing in response to the Lympha Press compression cycle.

Lympha Press® Optimal Plus™

The multi-chamber garments available with the Optimal Plus include:

LymphaPod®

Especially designed for treatment of extremely large patients. Easy to use sleeping bag design features 40 chambers to treat the entire lower body, including legs, hips, and abdomen.



ComfySleeve™

Effectively treats axillary edema and chest wall swelling, offering optimal treatment for your Breast Cancer patients.

Adjustable Leg Sleeve

Fully adjustable garment for treatment of the foot and leg. Hook-and-loop fasteners conform the sleeve to the leg shape for a perfect fit. Twelve-overlapping chambers ensure accurate pressure application and comfort.



12 Chamber Arm and Shoulder Sleeve



**Medical Solutions
SUPPLIER**

Because Life Can Be Better

9 Lacrue Avenue, Suite 105
Glen Mills, PA 19342
PH: 800.734.0422
FAX: 800.758.0339

medsolsupplier.com
facebook.com/medicalsolutionsupplier

Compliance is the key to successful treatment. The innovative design of the Lympha Press® line guarantees easy and comfortable use for consistent lifetime treatment.

Lympha Press® Optimal Plus™ Indications:

Hereditary lymphedema
Secondary lymphedema
Venous insufficiency
Venous stasis ulcers
Dysfunction of the muscle pump
Post mastectomy edema

Edema following trauma or sports injuries
Post immobilization edema
Lipedema
Reduction of wound healing time
Reduction of pain and swelling after injury and surgery

Contraindications:

Known or suspected deep vein thrombosis (DVT) or pulmonary embolism
During the inflammatory phlebitis process
Acute infection of the affected limb

Decompensated cardiac failure
Severe arteriosclerosis or other ischemic vascular disease
Any circumstance where increased venous and lymphatic return is undesirable